

The logo consists of the letters 'S', 'T', 'O', 'B', 'A', and 'G' each enclosed in a white rectangular box, which are then arranged in a horizontal row.

STOBAG

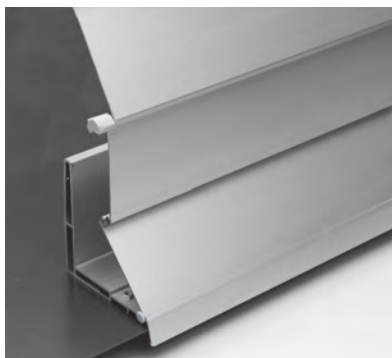
The background image shows a modern building with a series of windows covered by light grey, horizontally-slatted security shutters. A tree with green and yellowing leaves stands in front of the building, and a grassy area with fallen leaves is in the foreground.

# SECURE

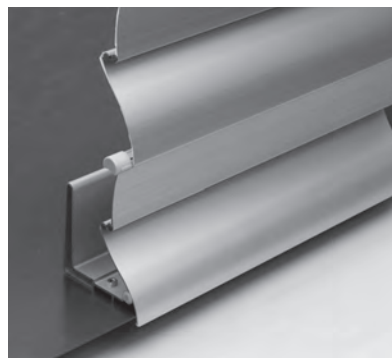
Robust security shutters made from impact-resistant aluminium.



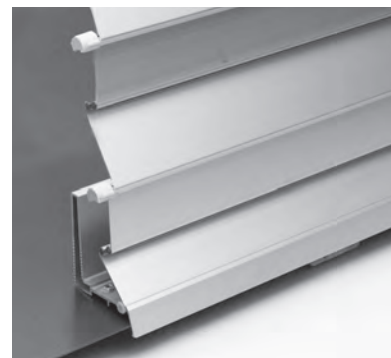
# SECURE FL1000



Large lamellas



Arched



Small lamellas

- Solid aluminium casing with 1.2–1.5 mm wall thickness
- Automatic locking of the casing via the side drive chain in any position
- The three different widths of lamella make them suitable for assembly anywhere
- The end lamella hinders contact when the casing is closed
- Can also be used to protect against balls that could destroy panes



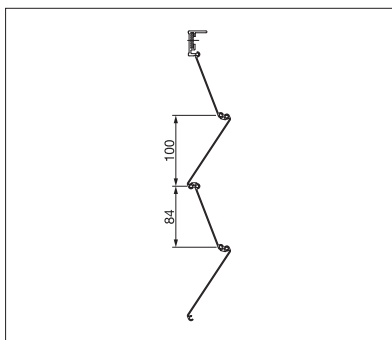
min. 50 cm  
max. 350 cm



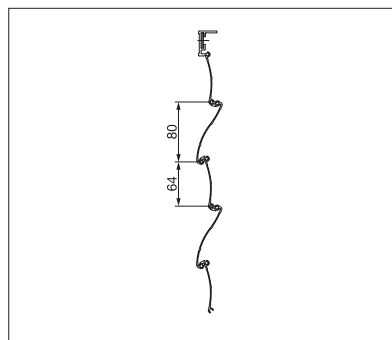
min. 50 cm  
max. 300 cm



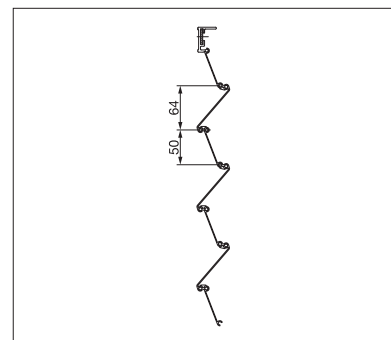
Technical dimensions in millimetres



Large lamellas



Arched



Small lamellas



REGISTRATION  
REQUIRED



## COLORS

Discover the diverse options when selecting frame colours.



## ELECTRICS

More convenience thanks to the automated control and lighting systems.

More information at [www.stobag.com](http://www.stobag.com)